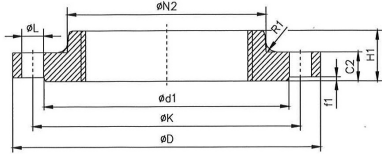


Gewindeflansch EN 1092-1 Typ 13-PN40



EN 1092-1 Typ 13 PN40

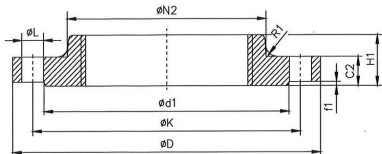
Wst. 1.4571 / TP 316Ti
Wst. 1.4404 / TP 316/316L
Wst. 1.4541 / TP 321
Wst. 1.4301/07 / TP 304/304L



Abnahmeprüfzeugnis gem.
EN 10204-3.1 ADW2,ADW9,ADW10

| DN mm | A mm | D mm | C2 mm | K mm | H1 mm | N2 mm | R1 mm | d1 mm | L mm | Gewinde Schrauben | f1 | Anzahl Schraubenloch | Gewicht Kg/St. |
|----------|---------|---------|----------|---------|----------|----------|----------|----------|---------|----------------------|----|-------------------------|-------------------|
| 10 | 3/8" | 90 | 16 | 60 | 22 | 30 | 4 | 40 | 14 | M12 | 2 | 4 | 0,65 |
| 15 | 1/2" | 95 | 16 | 65 | 22 | 35 | 4 | 45 | 14 | M12 | 2 | 4 | 0,72 |
| 20 | 3/4" | 105 | 18 | 75 | 26 | 45 | 4 | 58 | 14 | M12 | 2 | 4 | 1,04 |
| 25 | 1" | 115 | 18 | 85 | 28 | 52 | 4 | 68 | 14 | M12 | 2 | 4 | 1,25 |
| 32 | 1 1/4" | 140 | 18 | 100 | 30 | 60 | 6 | 78 | 18 | M16 | 2 | 4 | 1,81 |
| 40 | 1 1/2" | 150 | 18 | 110 | 32 | 70 | 6 | 88 | 18 | M16 | 3 | 4 | 2,06 |
| 50 | 2" | 165 | 20 | 125 | 34 | 84 | 6 | 102 | 18 | M16 | 3 | 4 | 2,74 |
| 65 | 2 1/2" | 185 | 22 | 145 | 38 | 104 | 6 | 122 | 18 | M16 | 3 | 8 | 3,65 |
| 80 | 3" | 200 | 24 | 160 | 40 | 118 | 8 | 138 | 18 | M16 | 3 | 8 | 4,59 |
| 100 | 4" | 235 | 24 | 190 | 44 | 145 | 8 | 162 | 22 | M20 | 3 | 8 | 6,10 |
| 125 | 5" | 270 | 26 | 220 | 48 | 170 | 8 | 188 | 26 | M24 | 3 | 8 | 8,22 |

Gewindeflansch EN 1092-1 Typ 13-PN16



EN 1092-1 Typ 13 PN16

Wst. 1.4571 / TP 316Ti
Wst. 1.4404 / TP 316/316L
Wst. 1.4541 / TP 321
Wst. 1.4301/07 / TP 304/304L



Abnahmeprüfzeugnis gem.
EN 10204-3.1 ADW2,ADW9,ADW10

| DN mm | A mm | D mm | C2 mm | K mm | H1 mm | N2 mm | R1 mm | d1 mm | L mm | Gewinde Schrauben | f1 | Anzahl Schraubenloch | Gewicht Kg/St. |
|----------|---------|---------|----------|---------|----------|----------|----------|----------|---------|----------------------|----|-------------------------|-------------------|
| 50 | 2" | 165 | 18 | 125 | 28 | 84 | 6 | 102 | 18 | M16 | 3 | 4 | 2,39 |
| 65 | 2 1/2" | 185 | 18 | 145 | 32 | 104 | 6 | 122 | 18 | M16 | 3 | 8 | 2,97 |
| 80 | 3" | 200 | 20 | 160 | 34 | 118 | 6 | 138 | 18 | M16 | 3 | 8 | 3,78 |
| 100 | 4" | 220 | 20 | 180 | 40 | 140 | 8 | 158 | 18 | M16 | 3 | 8 | 4,38 |
| 125 | 5" | 250 | 22 | 210 | 44 | 168 | 8 | 188 | 18 | M16 | 3 | 8 | 6,07 |