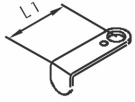


Zubehör

SV-Kontaktblech Hand-INI
holding plate-handle-prox. switch



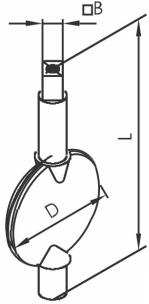
mit 1x M4- Schraube

chronimo
edelstahl

DN L1

25 - 100	45
125 - 200	55

SV-Klappen
disc



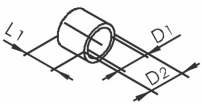
chronimo
edelstahl

DN D L B Gew.[kg]

DN 10-20 lieferbar

25	26	80	9.5	0,05
32	32	87.5	9.5	0,06
40	38	93.5	9.5	0,10
50	50	111	9.5	0,15
2 1/2"	60.1	129.5	9.5	0,23
65	66	128	9.5	0,24
75 / 3"	71.1	144	9.5	0,30
80	81	144	9.5	0,39
100	100	164	9.5	0,63
125	125	207	14	1,16
150	150.8	236.5	14	2,00
200	200	320	14	4,25

SV-ZB Buchse
butterfly valve bushing



chronimo
edelstahl

DN D1 D2 L1

25	10	12	5
32	10	12	5
40	12	14	10
50	12	14	10
2 1/2"	12	14	10
65	12	14	10
75 / 3"	14	16	12
80	14	16	12
100	14	16	12
125	18	20	18
150	18	20	18
200	22	26	30