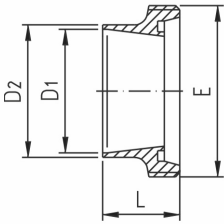


Rohrverschraubungen DIN/ISO und DIN/Zoll

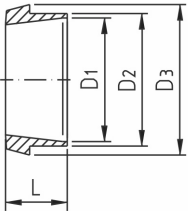
Gewindestutzen DIN/ISO
male DIN/ISO



chronimo
edelstahl

DN	D1	D2	E	L	Gew.[kg]
10	14	18	Rd 28 x 1/8"	21	0,04
15	18.1	21.3	Rd 34 x 1/8"	21	0,05
20	23.7	26.9	Rd 44 x 1/6"	24	0,10
25	29.7	33.7	Rd 52 x 1/6"	29	0,13
32	38.4	42.4	Rd 58 x 1/6"	32	0,16
40	44.3	48.3	Rd 65 x 1/6"	33	0,21
50	56.3	60.3	Rd 78 x 1/6"	35	0,30
65	71.5	76.1	Rd 95 x 1/6"	40	0,45
80	84.3	88.9	Rd 110 x 1/4"	45	0,60
100	109.1	114.3	Rd 130 x 1/4"	54	0,78
125	134.5	139.7	Rd 160 x 1/4"	46	1,12
150	163.1	168.3	Rd 190 x 1/4"	50	1,90

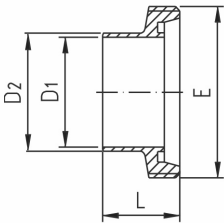
Kegelstutzen DIN/ISO
liner DIN/ISO



chronimo
edelstahl

DN	D1	D2	D3	L	Gew.[kg]
10	14	18	22,5	17	0,02
15	18.1	21.3	28,5	17	0,03
20	23.7	26.9	36,5	18	0,06
25	29.7	33.7	44	22	0,09
32	38.4	42.4	50	25	0,11
40	44.3	48.3	56	26	0,14
50	56.3	60.3	68,5	28	0,21
65	71.5	76.1	86	32	0,32
80	84.3	88.9	100	37	0,39
100	109.1	114.3	121	44	0,59
125	134.5	139.7	150	34	1,11
150	163.1	168.3	176	37	1,13

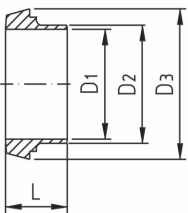
Gewindestutzen DIN/Zoll
male DIN/inch



chronimo
edelstahl

DN	D1	D2	E	L	Gew.[kg]
1"	22.9	26.5	Rd 52 x 1/6"	29	0,15
1 1/4"	29.2	33.0	Rd 58 x 1/6"	32	0,19
1 1/2"	35.1	38.5	Rd 65 x 1/6"	33	0,25
2"	47.8	51.5	Rd 78 x 1/6"	35	0,34
2 1/2"	60.5	64.5	Rd 95 x 1/6"	40	0,56
3"	72.2	77.5	Rd 104 x 1/6"	40	0,42
4"	97.6	102.5	Rd 130 x 1/4"	54	1,16

Kegelstutzen DIN/Zoll
liner DIN/inch



chronimo
edelstahl

DN	D1	D2	D3	L	Gew.[kg]
1"	22.9	26.5	44	22	0,10
1 1/4"	29.2	33.0	50	25	0,12
1 1/2"	35.1	38.5	56	26	0,15
2"	47.8	51.5	68,5	28	0,21
2 1/2"	60.5	64.5	86	32	0,37
3"	72.2	77.5	93	32	0,34
4"	97.6	102.5	121	44	0,82