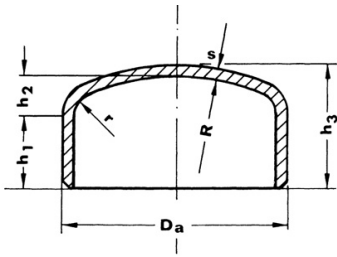


Klörperböden nach DIN 28011



plan gedreht (auf Wunsch mit Fase)
Tol. n. DIN 28011

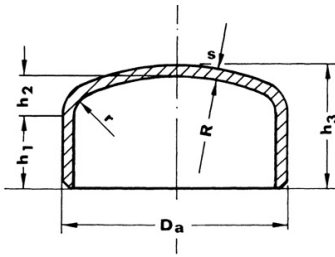
Wst. 1.4571 / TP 316Ti
Wst. 1.4404 / TP 316/316L
Wst. 1.4541 / TP 321
Wst. 1.4301 / 1.4307 / TP 304/304L

Abnahmeprüfzeugnis
gem. EN 10204-3.1



DN mm	D mm	S mm	H	h1 kg/m	GEWICHT Kg/St	DN mm	D mm	S mm	H	h1 kg/m	GEWICHT Kg/St
15	17,2	2,0	10	6	0,013	50	50,0	2,0	20	9	0,058
15	18,0	1,5	11	9	0,013	50	51,0	2,0	18	7	
15	18,0	2,5	11	5	0,013	50	52,0	2,0	18	7	0,058
15	19,0	1,5	13	9	0,013	50	53,0	1,5	18	7	0,044
15	20,0	2,0	13	8	0,013	50	54,0	2,0	21	9	0,067
15	21,3	2,0	15	10	0,015	50	56,0	3,0	25	13	
15	21,3	2,5	15	10	0,019	50	57,0	2,0	23	11	0,076
15	21,3	3,0	14	8	0,020	50	57,0	2,5	23	11	0,096
20	22,0	2,0	15	10	0,015	50	57,0	3,0	25	12	0,115
20	23,0	2,0	13	7	0,015	50	57,0	4,0	30	17	
20	25,0	2,0	15	9	0,018	50	57,0	5,0	32	18	
20	25,0	2,5	15	9	0,023	50	60,3	2,0	23	10	0,087
20	25,0	3,0	18	12	0,025	50	60,3	2,5	23	10	0,108
20	26,9	2,0	17	11	0,022	50	60,3	3,0	25	12	0,130
20	26,9	2,5	18	11	0,028	50	60,3	4,0	29	15	0,173
20	26,9	3,0	18	11	0,033	50	60,3	5,0	32	18	
25	28,0	1,5	15	9	0,022	65	64,0	2,0	22	9	0,087
25	28,0	2,0	15	9	0,022	65	64,0	4,0	24	9	
25	28,0	2,5	16	9	0,028	65	69,0	2,0	24	10	0,106
25	29,0	1,5	17	11	0,022	65	70,0	2,0	23	8	0,106
25	29,0	2,0	17	10	0,025	65	70,0	2,5	24	9	0,133
25	30,0	2,0	18	11	0,029	65	70,0	3,0	26	11	0,160
25	30,0	2,5	18	11	0,036	65	70,0	4,0	34	18	0,213
25	33,7	2,0	20	12	0,031	65	70,0	5,0	34	18	
25	33,7	2,5	20	12	0,039	65	73,0	3,0	30	14	
25	33,7	3,0	20	12	0,047	65	73,0	4,0	33	17	
25	33,7	4,0	23	14	0,065	65	76,1	2,0	25	7	0,131
32	34,0	1,5	14,0	7		65	76,1	2,5	25	9	0,163
32	35,0	2,0	15,0	7	0,031	65	76,1	3,0	27	11	0,196
32	35,0	3,0	15,0	7		65	76,1	4,0	31	14	0,261
32	36,0	2,0	15,0	7	0,031	65	76,1	5,0	32	15	
32	38,0	2,0	18,0	10	0,038	80	80,0	2,0	29	12	0,150
32	38,0	2,5	18,0	9	0,048	80	80,0	2,5	29	12	0,190
32	42,4	2,0	20,0	11	0,048	80	80,0	3,0	29	12	0,230
32	42,4	2,5	21,0	11	0,060	80	80,0	4,0	29	11	
32	42,4	3,0	21,0	11	0,072	80	84,0	2,0	28	11	0,150
32	42,4	4,0	22,0	12		80	85,0	2,0	27	9	0,150
40	40,0	1,5	18	9		80	86,0	3,0	29	11	0,230
40	40,0	2,0	18	9	0,042	80	88,9	2,0	38	20	0,210
40	40,0	2,5	18	9	0,053	80	88,9	2,5	39	20	0,260
40	40,0	3,0	20	11	0,063	80	88,9	3,0	39	20	0,310
40	44,5	2,0	21	11	0,053	80	88,9	4,0	39	20	0,410
40	44,5	2,5	21	11	0,066	80	88,9	5,0	40	20	
40	44,5	3,0	21	11	0,080	100	101,6	2,0	41	20	0,290
40	45,0	2,0	21	11	0,053	100	101,6	3,0	41	20	0,430
40	46,0	3,0	22	11		100	101,6	4,0	42	20	
40	48,3	2,0	20	10	0,058	100	101,6	5,0	43	21	
40	48,3	2,5	22	11	0,073	100	104,0	2,0	36	15	0,240
40	48,3	3,0	22	11	0,087	100	104,0	3,0	37	15	0,300
40	48,3	4,0	28	16	0,134	100	106,0	3,0	42	20	0,360
40	48,3	5,0	30	18		100	106,0	4,0	44	21	

Klörperböden nach DIN 28011



plan gedreht (auf Wunsch mit Fase)
Tol. n. DIN 28011

Wst. 1.4571 / TP 316Ti
Wst. 1.4404 / TP 316/316L
Wst. 1.4541 / TP 321
Wst. 1.4301 / 1.4307 / TP 304/304L

Abnahmeprüfzeugnis
gem. EN 10204-3.1



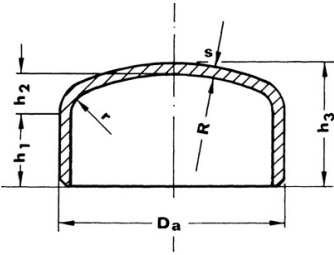
DN mm	D mm	S mm	H	h1 kg/m	GEWICHT Kg/St
----------	---------	---------	---	------------	------------------

100	108,0	2,0	42	20	0,300
100	108,0	2,5	43	21	0,370
100	108,0	3,0	43	20	0,450
100	108,0	4,0	44	21	0,600
100	108,0	5,0	44	20	
100	108,0	6,0	46	22	
100	114,3	2,0	43	20	0,320
100	114,3	2,5	43	20	0,400
100	114,3	3,0	44	20	0,480
100	114,3	4,0	44	20	0,640
100	114,3	5,0	45	20	
100	114,3	6,0	49	24	
125	120,0	5,0	48,0	21	
125	129,0	2,0	42,0	16	0,370
125	131,0	3,0	42,0	15	0,560
125	133,0	2,0	49,0	22	0,420
125	133,0	2,5	49,0	22	0,530
125	133,0	3,0	49,0	22	0,630
125	133,0	4,0	51,0	23	0,840
125	139,7	2,0	47,0	19	0,440
125	139,7	2,5	48,0	20	0,560
125	139,7	3,0	49,0	20	0,670
125	139,7	4,0	50,0	21	0,890
125	139,7	5,0	49,0	19	
125	139,7	6,0	49,0	19	
150	152,4	3,0	52,0	21	
150	152,4	4,0	53,0	21	
150	152,4	5,0	53,0	21	
150	154,0	2,0	51,0	20	0,530
150	154,0	3,0	52,0	21	
150	156,0	3,0	52,0	20	0,800
150	156,0	4,0	52,0	20	1,070
150	159,0	2,0	52,0	20	0,560
150	159,0	2,5	54,0	22	0,710
150	159,0	3,0	54,0	21	0,850
150	159,0	4,0	56,0	23	1,130
150	168,3	2,0	54,0	20	0,600
150	168,3	2,5	54,0	20	0,750
150	168,3	3,0	54,0	20	0,900
150	168,3	4,0	55,0	20	1,190
150	168,3	5,0	55,0	20	
150	168,3	6,0	56,0	20	
175	177,8	2,0	56,0	21	
175	177,8	3,0	56,0	20	
175	177,8	4,0	56,0	19	
175	193,7	2,0	57,0	18	
175	193,7	3,0	59,0	20	1,200
175	193,7	4,0	59,0	19	1,600
175	193,7	5,0	59,0	19	
175	193,7	6,0	62,0	21	
200	200,0	20	61,0	21	

DN mm	D mm	S mm	H	h1 kg/m	GEWICHT Kg/St
----------	---------	---------	---	------------	------------------

200	200,0	3,0	61,0	21	
200	200,0	4,0	60,0	19	
200	204,0	2,0	61,0	20	0,880
200	204,0	4,0	62,0	20	
200	204,0	5,0	62,0	20	
200	205,0	2,5	56,0	15	
200	206,0	3,0	62,0	21	1,310
200	208,0	4,0	59,0	17	1,750
200	208,0	4,0	64,0	22	
200	210,0	5,0	64,0	21	
200	219,1	2,0	63,0	20	0,990
200	219,1	3,0	64,0	20	1,480
200	219,1	4,0	65,0	20	1,970
200	219,1	5,0	65,0	20	
200	219,1	6,0	67,0	21	
225	236,0	3,0	67,0	20	1,740
250	244,5	1,5	68,0	20	
250	244,5	2,0	68,0	20	
250	244,5	3,0	70,0	21	
250	244,5	4,0	70,0	21	
250	244,5	5,0	70,0	20	
250	250,0	2,0	72,0	23	
250	250,0	3,0	73,0	23	
250	250,0	4,0	73,0	22	
250	250,0	5,0	73,0	22	
250	254,0	2,0	70,0	20	1,320
250	254,0	3,0	62,0	11	
250	254,0	4,0	73,0	22	
250	254,0	5,0	72,0	20	
250	254,0	6,0	72,0	20	
250	256,0	3,0	73,0	22	1,980
250	258,0	4,0	73,0	21	
250	267,0	3,0	74,0	21	2,130
250	267,0	4,0	74,0	20	
250	273,0	2,0	74,0	20	
250	273,0	3,0	74,0	20	2,180
250	273,0	4,0	75,0	20	
250	273,0	5,0	75,0	19	
250	273,0	6,0	78,0	22	
300	300,0	2,0	80	21,0	
300	300,0	3,0	80	20,0	
300	300,0	4,0	84	24,0	
300	300,0	5,0	86	25,0	
300	300,0	6,0	87	26,0	
300	304,0	2,0	80	20,0	
300	304,0	3,0	80	20,0	
300	304,0	4,0	84	23,0	
300	304,0	5,0	86	24,0	
300	306,0	3,0	81	20,0	2,790
300	306,0	4,0	81	20,0	
300	323,9	2,0	84	20,0	

Klörperböden nach DIN 28011



plan gedreht (auf Wunsch mit Fase)
Tol. n. DIN 28011

Wst. 1.4571 / TP 316Ti
Wst. 1.4404 / TP 316/316L
Wst. 1.4541 / TP 321
Wst. 1.4301 / 1.4307 / TP 304/304L

Abnahmeprüfzeugnis
gem. EN 10204-3.1



DN mm	D mm	S mm	H	h1 kg/m	GEWICHT Kg/St	DN mm	D mm	S mm	H	h1 kg/m	GEWICHT Kg/St
300	323,9	3,0	84	20,0	2,870	400	400,0	2,0	95	17,0	
300	323,9	4,0	85	20,0		400	400,0	3,0	95	16,0	
300	323,9	5,0	85	20,0		400	400,0	4,0	95	15,0	
300	323,9	6,0	87	21,0		400	400,0	5,0	98	18,0	
350	350,0	2,0	83	14,0		400	406,4	3,0	95	15,0	
350	350,0	3,0	83	14,0		400	406,4	4,0	95	14,0	
350	350,0	4,0	84	14,0		400	406,4	5,0	99	18,0	
350	350,0	5,0	88	18,0		400	419,1	3,0	94	11,0	
350	355,6	4,0	85	14,0		400	419,1	4,0	98	15,0	
350	355,6	5,0	89	17,0		450	450,0	3,0	109	20,0	
350	356,0	3,0	82	11,0	3,400	500	508,0	3,0	115	15,0	
350	368,0	3,0	89	16,0	3,570	500	508,0	4,0	120	20,0	
350	368,0	4,0	90	17,0		600	609,6	4,0	135	15,0	